



INSTRUCTION BULLETIN

No. 9045219
Machine: S16
Published: 12-2020
Rev. 00

NOTE: DO NOT DISCARD the Parts List from the Instruction Bulletin. Place the Parts List in the appropriate place in the machine manual for future reference. Retaining the Parts List will make it easier to reorder individual parts and will save the cost of ordering an entire kit.

NOTE: Numbers in parenthesis () are reference numbers for parts listed in Bill of Materials.

Installation instructions for **kit number 9045205**

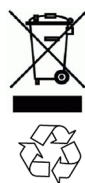
Kit installation must be performed by TennantTrue[®] service or an authorized service provider.

SYNOPSIS:

This kit contains the parts needed to install strobe light/backup alarm kit on S16 sweepers.
Please follow step-by-step instructions.

SPECIAL TOOLS / CONSIDERATIONS: NONE

(Estimated time to complete: 1.25 hours)



PROTECT THE ENVIRONMENT

Please dispose of packaging materials, used machine components such as batteries and fluids in an environmentally safe way according to local waste disposal regulations.

Always remember to recycle.

PREPARATION:

1. Remove the left side shroud from the machine. Set the left side shroud aside.
2. **Machines with high dump only:** Turn key switch to ON, lift the hopper to the fully raised position, engage the hopper support, and turn key switch OFF. Hopper must be raised to access area where alarm (5) will be installed onto the machine.

 **WARNING: Lift arm pinch point. Stay clear of hopper lift arms.**

 **WARNING: Raised hopper may fall. Engage hopper support bars.**

FOR SAFETY: Before leaving or servicing machine, stop on level surface, turn off machine, and remove key.

3. Lift the operator seat open and secure the seat into the fully open position.

4. Disconnect the battery cable from the machine.

 **WARNING: Always disconnect battery cables from machine before working on electrical components.**

5. Open and/or remove the electrical compartment cover to access the rear breaker bracket/main wire harness connections behind the rear breaker bracket. (Fig. 1)

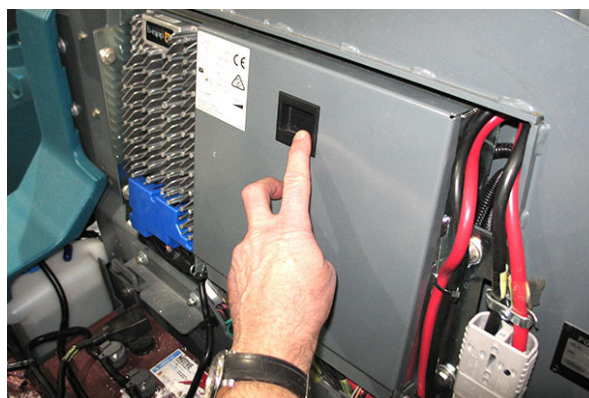


FIG. 1

INSTALLATION:

1. Route the light harness (10) through the the leg of the light bracket (1) that will be installed on the left side of the machine. (Fig. 3)
2. Use four SEMS M8 hex screws (2) to install the light bracket (1) onto the bulkhead bracket. (Fig. 2)
3. Route the light harness (10) into the electrical compartment near the rear breaker bracket and connect the light harness to the main wire harness. (Fig. 2/Fig. 3)
4. Use four M5 button screws (4) to install the strobe light (3) onto the light bracket (1). (Fig. 2)
5. Connect the light harness (10) to the strobe light (3). (Fig. 2/Fig. 3)
6. Use the wire tie (11) to secure the light harness (10) to the light bracket (1). (Fig. 3)
7. Insert the 2.5- Amp circuit breaker (9) into circuit breaker location CB8 on the rear breaker bracket. (Fig. 3)
8. Connect the main wire harness to the 2.5- Amp circuit breaker (9) installed in the previous step. (Fig. 3)
9. Connect the main wire harness to the backup alarm (5). (Fig. 3)
10. Use a hex screw (7) and a flat washer (6) to install the backup alarm (5) onto the bulkhead bracket. (Fig. 3)
11. Remove the hardware securing the control panel to the front shroud and carefully lift the control panel from the shroud. Do not break any wire or cable connection when lifting the panel from the shroud. (Fig. 3)
12. Remove the hole plug from the location where the rocker switch (8) is to be installed on the control panel. Discard the plug. (Fig. 3)
13. Insert the rocker switch (8) into the control panel. (Fig. 3)
14. Connect the main wire harness to the rocker switch (8). (Fig. 3)
15. Reinstall the control panel onto the front shroud. (Fig. 3)
16. Close/reinstall the electrical compartment cover onto the machine.
17. Reconnect the battery cable to the machine.
18. Lower the operator seat.
19. **Machines with high dump only:** Turn key switch to ON and lower the hopper.
20. Turn key switch to ON and test the machine. Press the rocker switch (8) to turn on the strobe light and backup alarm. The light should function while the machine is on and the backup alarm should function when the machine is in reverse. Check cable connections and if strobe light and/or backup alarm do not function.

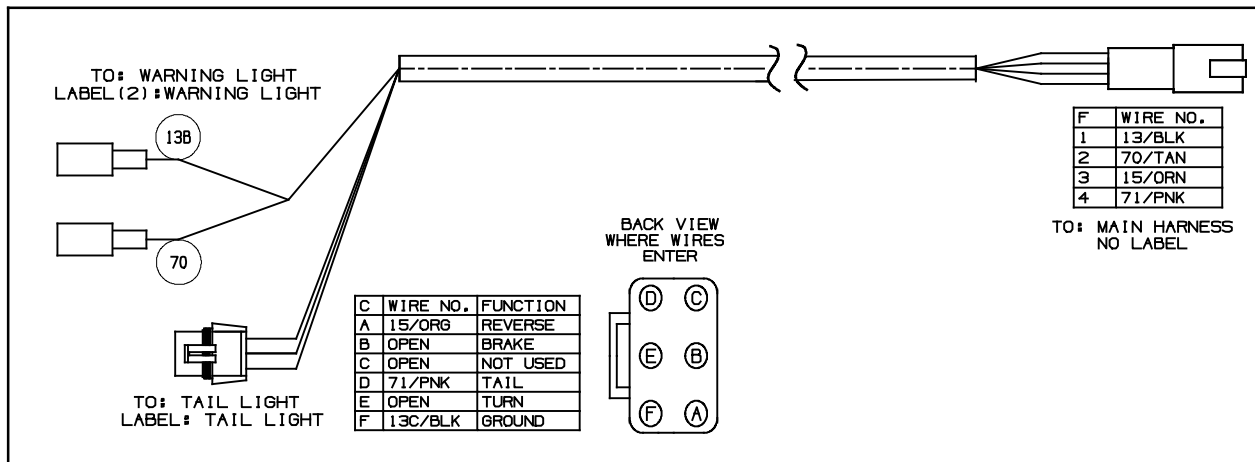


FIG. 2

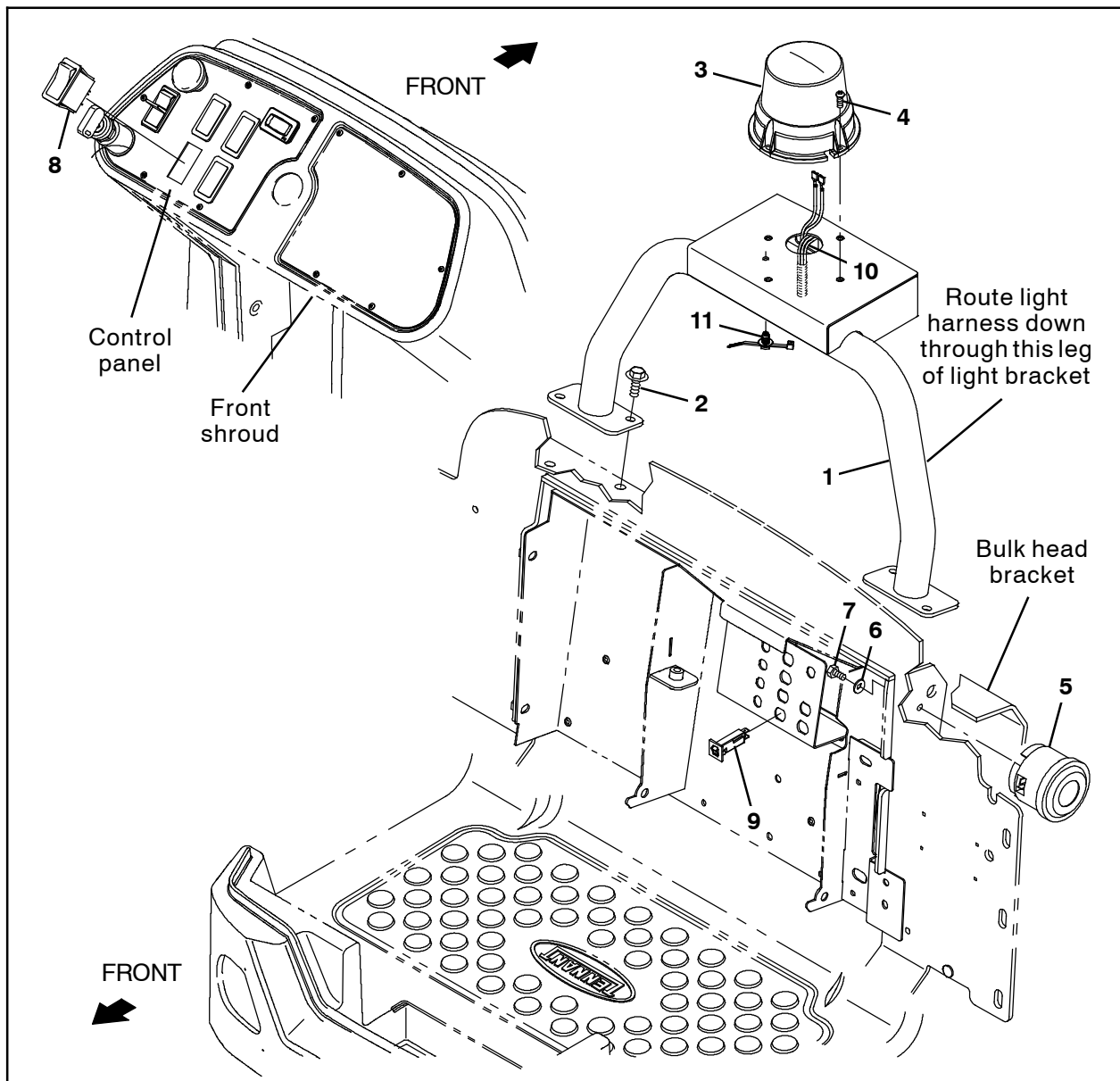


FIG. 3

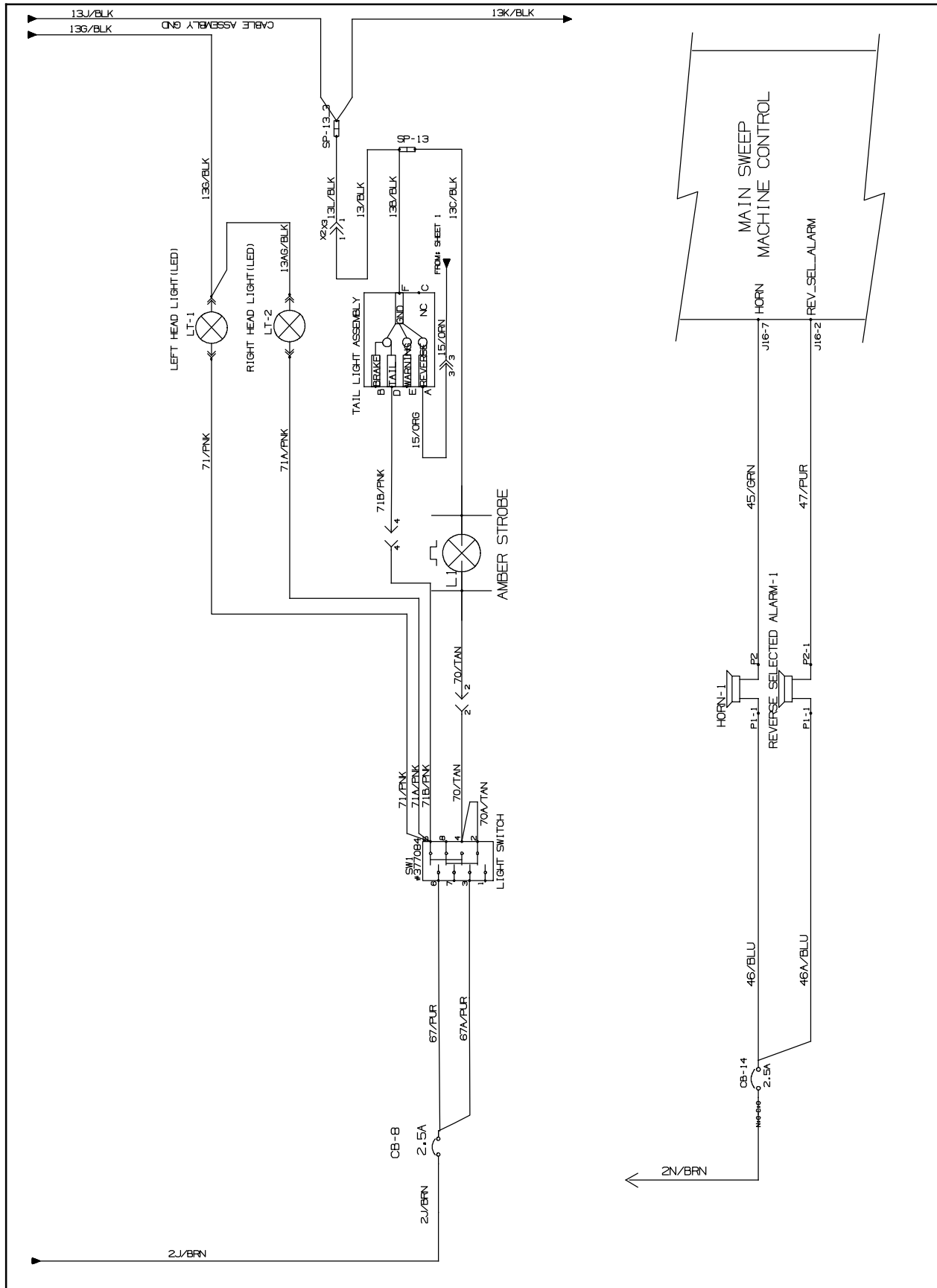


FIG. 4

Bill Of Materials For Light Kit, Strobe/BU Alarm, CI [S16] - 9045205

Ref.	Tennant Part No.	Description	Qty.
1	1251334	Bracket Wldt, Light	1
2	1020341	Screw, Hex, M8 X 1.25 X 29, SS, SEMS	4
3	1075283	Light, Strobe, Amb, 12- 48VDC [LED]	1
4	1205799	Screw, Btn, M5 X 0.8 X 16, 8.8, NI, Torx	4
5	1058694	Alarm, Backup, 12- 48VDC, Adj	1
6	32483	Washer, Flat, 0.25, SAE	1
7	19315	Screw, Hex, .25- 20 X 0.50, SAE	1
8	377084	Switch, Rocker, Prgrsv	1
9	1064184	Circuit Breaker, 02.5A, Resettable	1
10	1076607	Harness Ele [Lights, S16]	1
11	1210807	Wire, Tie [w.25" Fir Tree Clip]	1

TENNANT COMPANY
P. O. Box 1452
Minneapolis, MN 55440-1452